

GAUGE VALVES GC400

DESCRIPTION

The GC400 gauge valves were designed for mounting of instruments such as pressure gauges, transmitters and switches. Throttling of the valve protects the connected instrument against pressure spikes. Complete valve shut-off and pressure release through the integrated vent plug allows safe instrument removal for replacement or calibration procedures.

MAIN FEATURES

Integrated vent plug.
 Designed and tested according to DIN 16270.

OPTIONS: Version for oxygen service.

USE: Saturated steam, water, compressed air and other fluids compatible with the construction.

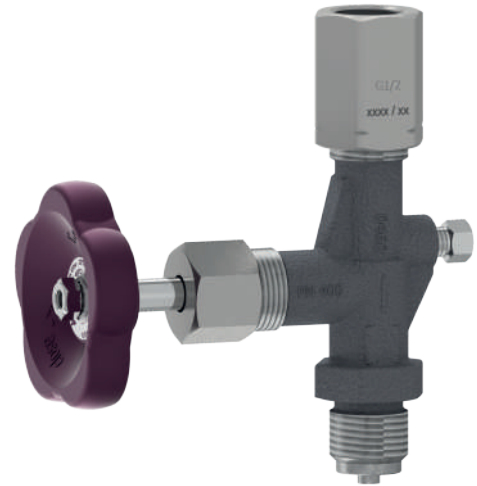
AVAILABLE MODELS:

GC400 – carbon steel.
 GC400I – stainless steel.

CONNECTIONS: ISO 228 G 1/2" (male x female).

INSTALLATION: Any position.

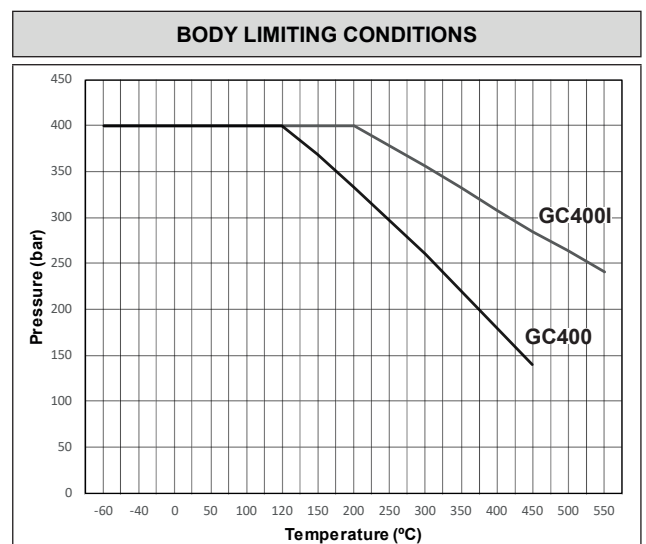
Remarks:
 Other sizes, materials and connections available on request.

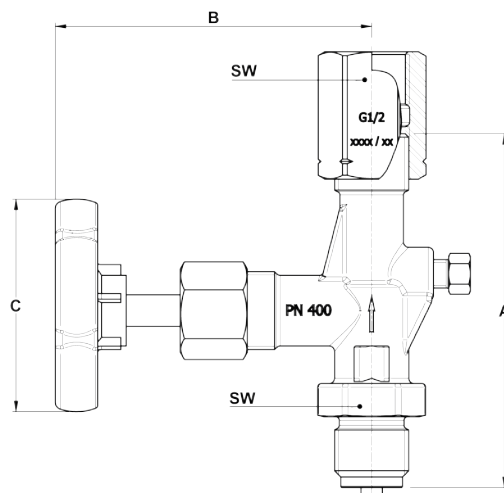


GC400



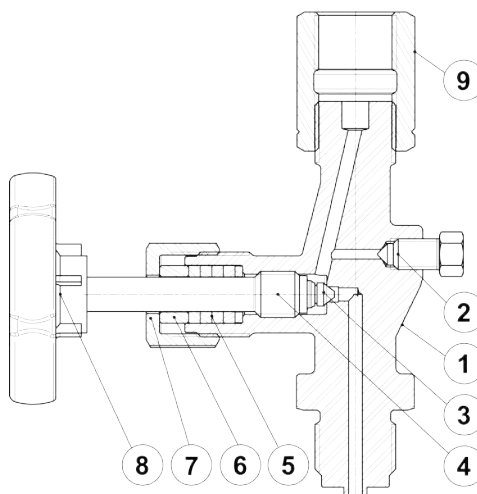
GC400I





DIMENSIONS (mm)

| SIZE | A | B | C | SW | WEIGHT (kg) |
|-------------|-----|----|----|----|-------------|
| 1/2" x 1/2" | 100 | 90 | 63 | 27 | 0,54 |



MATERIALS

| POS. N° | DESIGNATION | GC400 | GC400I |
|---------|---------------------|----------------------|----------------------|
| 1 | Body | P250GH / 1.0460 | AISI 316 Ti / 1.4571 |
| 2 | Vent plug | AISI 316 Ti / 1.4571 | AISI 316 Ti / 1.4571 |
| 3 | Valve | AISI 420C / 1.4034 | AISI 316 Ti / 1.4571 |
| 4 | Stem | X14CrMoS17 / 1.4104 | AISI 316 Ti / 1.4571 |
| 5 | Packing | Graphite | Graphite |
| 6 | Packing gland | 11SMnPb30 / 1.0718 | AISI 316 Ti / 1.4571 |
| 7 | Packing nut | 11SMnPb30 / 1.0718 | AISI 316 Ti / 1.4571 |
| 8 | Handwheel | Plastic | Plastic |
| 9 | Compression fitting | 11SMnPb30 / 1.0718 | AISI 316 Ti / 1.4571 |