

## STEAM INJECTORS SI125 and SI140

### DESCRIPTION

The SI series steam injectors from ADCA are condensate injectors. They ensure low noise and vibration and rapid heating of still or flowing fluids in basins and vessels due to direct steam injection. Steam enters through the inlet housing, passes along the centre of the heater, mixing with the cool water, which is drawn in through radial holes.

### MAIN FEATURES

Quiet operation.  
Corrosion-resistant.  
No moving parts.

**OPTIONS:** Complete system including vacuum breaker and self operated controller.  
Different capacities and designs available under request.

**USE:** Direct steam injection heating systems.

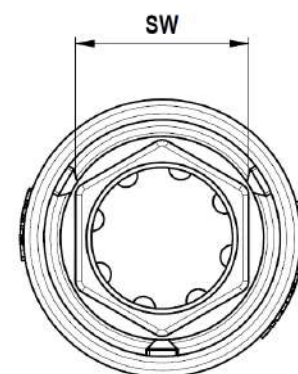
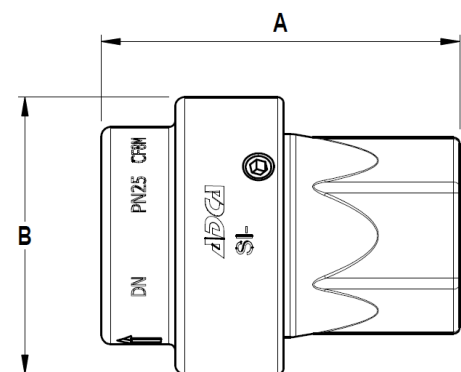
**AVAILABLE MODELS:** SI125 and SI140.

**SIZES:** 1" and 1 1/2".

**CONNECTIONS:** Female threaded ISO 7 Rp.

**INSTALLATION:** Horizontal installation.  
See IMI – Installation and maintenance instructions.

**MATERIAL:** CF8M / 1.4408.



LIMITING CONDITIONS	
Body design conditions	PN 25
PMO – Maximum operating pressure	17 bar
TMO – Maximum operating temperature	95 °C

DIMENSIONS (mm)				
SIZE	A	B	SW	WGT. (kg)
1"	88	73	40	0,97
1 1/2"	114	88	55	1,8

FLOW RATE CAPACITY (kg/h)																		
MODEL	SIZE	INLET STEAM PRESSURE (bar)																
		1	2	3	4	5	6	7	8	9	10	11	12	13	14	15	16	17
SI125	1"	130	170	270	352	415	500	575	660	695	795	880	940	980	1040	1090	1150	1220
SI140	1 1/2"	395	570	800	970	1120	1290	1440	1625	1810	1940	2240	2360	2590	2700	2800	3050	3200

Example: We require the injection of 3500 kg/h of steam with a pressure of 8 bar. From the injector capacity table, we see that at 8 bar the injector SI140 will process 1625 kg/h, and 3500 divided by 1625 = 2,15.  
Two injectors will barely cope, so it is recommended to install three injectors, which will meet the demand.